

# Temporal LULC Change Analysis of Urban Slum in Pluit Region of Jakarta, Indonesia



Fig.1 Study Area

## Business Need:

Land use and land cover change is significant in addressing various critical issues related to Society, Economy and Environment. Landscape changes occur at all scales as the world is changing in a very rapid pace.

The business requirement was to acquire appropriate satellite images of different years and generate a report illustrating temporal changes in landscape of the study area.

## Inputs Used:

Available High Resolution Satellite Images in public domain.

## Business Solution:

The appropriate 4 sets of satellite images for the years 2003, 2009, 2012 and 2014 were acquired to create the land use land cover maps.

Change Detection report is generated on the basis of result of the LU/LC map analysis and its accuracy is accessed on the basis of statistics generated.

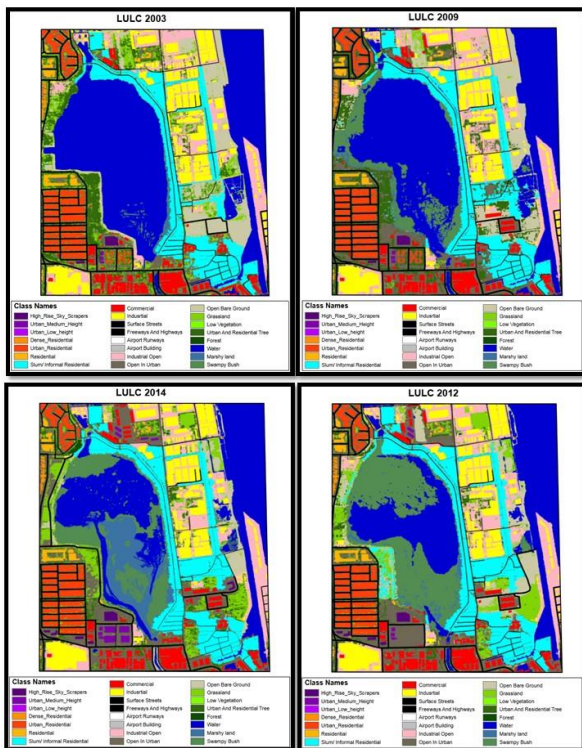


Fig2. LU/LC of 2003, 2009, 2012 and 2014

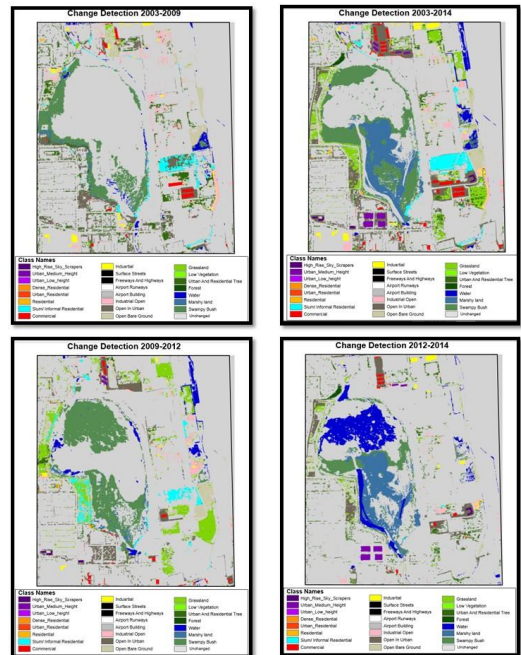


Fig.3. LU/LC change analysis of 2003, 2009, 2012 and 2014

## Project Shipment:

The following shipments were made-

- i) Landuse and Landcover map
- ii) Change analysis Report

